



**Sydney School of
Entrepreneurship**

**ANNUAL REPORT
2017-2018**

Vision

Our vision is that Sydney School of Entrepreneurship (SSE) is recognised as the leading entrepreneurial school in Australia, with a powerful reputation globally.

Academic members proudly champion this joint initiative. Student entrepreneurs vie for the opportunity to attend. Relationships with partners result in high-traffic global interactions.

Supporters generously contribute financially and in kind. A close and powerful alumni network is recognised for its contribution to SSE and society. NSW, Australia, becomes a destination for driving next-generation entrepreneurship.

Mission

Our mission is to build a diverse community of next-generation entrepreneurs, creating high-growth companies and jobs of the future.

An unprecedented collaboration
between 12 member institutions



With cornerstone investment by NSW Government



Contents

| | |
|--|-------|
| Foreward by the Chair | 2 |
| Chief Executive Officer's report | 3 |
| Governance and champions | 4–5 |
| Foundation story | 6 |
| Executive summary | 7 |
| Key achievements – Year 1 | 8–11 |
| Nine ways to learn | 12 |
| Units – for student entrepreneurs | 13–15 |
| International bootcamps – for startups | 16 |
| Learning activities – for community | 17 |
| Development activities – for members | 18 |
| Our reach | 19 |
| Future activities | 20 |



Foreward by the Chair



In Sydney School of Entrepreneurship's first full year of operations there have been many highlights to report and many challenges that have been met, with others projected for implementation in 2018-19.

The major challenge has been to implement the first core academic unit, The Navigator. Around 100 student entrepreneurs from all 12 member institutions undertook this unit via a blended online and on-campus delivery. The feedback from students was excellent. A further 60 students enrolled for The Navigator in the second half of 2018.

A major challenge for 2018-19 is to develop four more academic units. The first of these units, Ideation, has already been developed and delivered in the second half of 2018.

The appointment of a new Education and Training Director, Jonathan Jones, has been very successful in speeding up progress in the development of these new units of study. He is working closely with CEO Nick Kaye and Professor Denise Kirkpatrick, a member director from Western Sydney University and Chair of the SSE Academic Committee.

I wish to pay particular thanks to my fellow Board members all of whom contributed greatly in assisting the CEO. They include the members of the Audit Finance & Risk Committee, the Academic Committee and the Nominations & Remuneration Committee, who prepared the draft Key Performance Indicators for approval by the Board and the NSW Department of Industry (DOI).

The relationships with the NSW DOI and the Deputy Premier, the Hon John Barilaro MP, and the Minister for Trade & Industry, the Hon Niall Blair, continue to be strong as they are with all 12 member institutions.

**Emeritus Professor
Mark Wainwright AM**

Chair, SSE Board of Directors

‘We are looking for rising stars with the grit to do something different.’

Chief Executive Officer's report



The end of the first full year of operations is a critical milestone for any new organisation. Concepts become reality and foundations are laid for future growth. That is why I am delighted our vision for SSE as a larger common stage for entrepreneurship and collaboration is bearing fruit.

Our team, backed by robust governance structures, is bringing to life the strategic vision of the NSW Government. It is a privilege to have worked with people from across NSW, from Albury to Armidale and Cooma to Lismore, to grow the SSE community.

In October 2018 I was honoured to accept a global award on behalf of SSE for the 2018 Outstanding Emerging Entrepreneurship Centre, from the Global Consortium of

Entrepreneurship Centres (GCEC) at their annual conference.

For our achievements to be recognised globally, by an organisation representing more than 250 of the leading universities engaged in entrepreneurship education worldwide, is a great tribute to the early success and future potential of SSE.

This annual report outlines our progress since the SSE campus opened in August 2017.

We are delivering on our goals to make opportunity accessible, inspire change and adapt to the demands of our diverse students. SSE is equipping students with the entrepreneurial mindset, global outlook and practical skills they need to become the next generation of successful business builders in a rapidly changing world.

Our achievements have only been possible through the enthusiasm and commitment of our members, all 11 NSW universities and TAFE NSW, and the continued support of the NSW Government.

I would also like to thank the students, faculty and leadership of our members, as well as corporate and industry partners in the startup ecosystem, and the SSE team for their unstinting energy and commitment.

The goal in 2018-19 is to scale our impact. Amongst other initiatives, this will include four new units of study, more activities hosted on campus, a major new bootcamp in India in partnership with the NSW Government, and further strengthening of our network of partners and alumni.

I would like to conclude by emphasising our commitment to diversity - across institutions, disciplines, locations and backgrounds. It underpins everything we do because it enables the greatest breakthroughs and ideas to emerge.

Nick Kaye

Chief Executive Officer



Governance and champions

Our Board of Directors and Committees were established in 2017. With 12 large, diverse and complex organisations as members, strong governance foundations underpin SSE’s role as an honest broker.

This oversight and guidance ensures we maintain high academic standards, build trust with our members, partners and student entrepreneurs, and keeps us accountable to the NSW Government, other financial supporters and the wider community.

Board of Directors

Emeritus Professor Mark Wainwright
Independent Director and Chair

Dr Raji Ambikairajah
Independent Director

Professor Attila Brungs
*Member Director
Vice-Chancellor and President
University of Technology Sydney*

Professor Kevin Hall
*Member Director
Deputy Vice-Chancellor (Research and Innovation)
University of Newcastle*

Ms Fiona Pak-Poy
Independent Director

Professor Denise Kirkpatrick
*Member Director
Deputy Vice-Chancellor and
Vice President
Western Sydney University*

Ms Liane Sayer-Roberts
Director-Government Nominee

Audit Finance & Risk Committee

Ms Fiona Pak-Poy
Committee Chair

Dr Raji Ambikairajah
Committee Member

Mr John Rohan
Committee Member

Ms Tze Masters
Committee Member

Nominations and Remuneration Committee

Emeritus Professor Mark Wainwright
Committee Chair

Dr Raji Ambikairajah
Committee Member

Professor Denise Kirkpatrick
Committee Member

Ms Liane Sayer-Roberts
Committee Member

Champions

Our network of champions is our principal point of contact at each member institution. They ensure their institutions support collaborative opportunities with SSE and refer students to join our activities.

Australian Catholic University

Professor Marea Nicholson
Associate Vice-Chancellor NSW/ACT

Charles Sturt University

Professor Morgan Miles
Professor of Entrepreneurship

Macquarie University

Professor David Wilkinson
Deputy Vice-Chancellor (Corporate Engagement)

Southern Cross University

Mr Ben Roche
Pro Vice-Chancellor (Engagement)

TAFE NSW

Ms Lucy Arundell
Chief Education and Training Officer

University of Newcastle

Professor Kevin Hall
Deputy Vice-Chancellor (Research and Innovation)

The University of Sydney

Professor Richard Miles
Pro Vice-Chancellor (Education-Enterprise & Engagement)

University of New England

Dr Mary-Louise Conway
Senior Lecturer
UNE Business School

University of Technology Sydney

Professor Andrew Parfitt
Provost & Senior Vice-President

University of Wollongong

Professor Dominic Riordan
Director Academic Quality and Standards

UNSW Sydney

Professor Nick Wailes
Associate Dean (Digital & Innovation)

Western Sydney University

Professor Simon Barrie
Pro Vice-Chancellor (Learning Transformations)

Academic Committee

The principal body that oversees academic unit development as well as endorsement for SSE units.

Professor Denise Kirkpatrick

Committee Chair
Deputy Vice-Chancellor and Vice President
Western Sydney University

Professor Andrew Parfitt

Provost and Senior Vice-President
University of Technology Sydney

Professor Philippa Pattison

Deputy Vice-Chancellor (Education)
The University of Sydney

Professor Alison Sheridan

Head of Business School
University of New England

Professor Wilma Vialle

Professor of Education and Psychology
University of Wollongong

Above left: Board of Directors and CEO at SSE Campus.

Left to right: Prof Denise Kirkpatrick, Emeritus Prof Mark Wainwright, Ms Liane Sayer-Roberts, Prof Kevin Hall, Mr Nick Kaye, Prof Attila Brungs, Dr Raji Ambikairajah, Ms Fiona Pak-Poy.



Foundation story

In 2016 the NSW Government catalysed Sydney School of Entrepreneurship with cornerstone investment to build an unprecedented collaboration between all 11 NSW universities and TAFE NSW.

The impetus came from a 2015 Commonwealth Chief Economist research paper that showed startups created 1.44 million jobs across Australia between 2006 and 2011.

SSE is a key plank of the networked innovation ecosystem the NSW Government is building under its strategy to embrace innovation and drive jobs growth through supporting a culture of startups and entrepreneurship in Australia.

The NSW Government looked to the Stockholm School of Entrepreneurship, a trailblazing collaboration between five academic members in one city, and set out to amplify this model in NSW.

In late 2016, Nick Kaye, an Australian who led the Stockholm School of Entrepreneurship for 10 years, became founding CEO. He built a small team to prepare SSE to begin operating.

A central campus in Ultimo was fitted out and the SSE team travelled across the state to visit all member institutions and engage rural and regional communities and industry partners in many different sectors.

In the lead-up to the launch, SSE Champions were appointed to represent each of the members. The SSE Board of Directors was appointed and an Academic Committee formed to oversee operations and education and training.

SSE opened its doors on 16 August 2017 at a launch attended by all 12 members, SSE's first cohort of student entrepreneurs and a network of partners. NSW Deputy Premier John Barilaro, whose vision led to SSE, officially opened the Ultimo headquarters and campus.

OUR 12 FOUNDING MEMBERS:

Australian Catholic University

Charles Sturt University

Macquarie University

Southern Cross University

TAFE NSW

The University of Sydney

The University of Newcastle

University of New England

University of Technology Sydney

University of Wollongong

UNSW Sydney

Western Sydney University



SSE was founded with cornerstone investment by the NSW Government to develop a new generation of entrepreneurs to create high-growth companies and jobs of the future.

Executive summary

Our collaboration is creating a larger common stage for entrepreneurship to thrive, more than any one of our member institutions could deliver alone.

In SSE's first year of operations:

- Winner of 2018 Outstanding Emerging Entrepreneurship Centre award by the GCEC, a 250+ member organisation of leading global university-based entrepreneurship centres.
- 100+ activities hosted by SSE, in collaboration with member and partner institutions, to drive innovation and entrepreneurship.
- More than 4,000 people welcomed to activities hosted by SSE and its members and partners, at our Ultimo campus or at one of our member campuses across the state.
- 2,000 student entrepreneurs engaged in activities to develop an entrepreneurial mindset and skills, and connect to a powerful partner network.
- Strong regional participation with 30 per cent of student entrepreneurs living outside Sydney.
- SSE connects globally with international bootcamps sending startups to Silicon Valley, Sweden and China.
- First 100 student entrepreneurs graduate from SSE's inaugural unit of study – from all 12 members, a diverse range of locations and disciplines, with an even gender balance.
- Robust governance is established through a Board of Directors, Board Committees and an Academic Committee.
- 60+ member faculty engaged in development activities to foster experiential learning techniques, supported by a network of SSE champions from each member institution.
- Experts in entrepreneurship education from all 12 members collaborate to co-design a new SSE curriculum for 2018-19 at an education hackathon held at the SSE campus.
- Planning underway for an international bootcamp to India in early 2019, in partnership with the NSW Government, for 40 young entrepreneurs based in NSW with an early stage startup.



“We invested \$25 million to help establish Sydney School of Entrepreneurship with the aim of creating a place where students from across the state could come together, start thinking like entrepreneurs, and potentially go on to turn their creative ideas into thriving businesses. It’s a remarkable place that fosters creativity, collaboration and ambition – all qualities we all want to encourage amongst our youngest, brightest minds.”

- John Barilaro, NSW Deputy Premier

NSW Deputy Premier and Minister for Regional NSW, Small Business and Skills John Barilaro (pictured right) officially opened SSE's new campus on 16 August 2017, joined by SSE CEO Nick Kaye.



Key achievements – Year 1

New campus

In August 2017, SSE opened its new state-of-the-art campus in Ultimo, the heart of Australia's highest-density innovation precinct and connected public transport hub.

This central location facilitates high-traffic interactions with student entrepreneurs, tertiary institutions, startups, industry partners and global visitors.

A new school for new ways of working, our campus is a physical hub to expand our learning activities and scale our statewide impact.

100+
activities
hosted

SSE hosts a wide range of member and partner activities, attracting diverse entrepreneurs and interests to SSE. In addition to academic units, Masterclasses, International Bootcamps and academic development activities provide experiential learning. Global Series and Speakers Series activities connect participants with leading entrepreneurs.

4,000
people
welcomed

We warmly welcomed more than 4,000 visitors to SSE at our Ultimo campus and at co-hosted activities at member campuses across the state. Our growing community is a diverse mix of academics, students, entrepreneurs, industry and corporate partners, government representatives and the public. Our network continues to grow.

2,000
students
engaged

Our diversity is our strength. From experiential learning activities led by specialised academics and global thought leaders to community workshops and member pitch nights, student entrepreneurs engage with peers from a cross-section of disciplines and member institutions, and connect to a powerful partner network.

First
100
graduates

First unit of study

Two cohorts of student entrepreneurs from across the state completed SSE's inaugural core unit of study, The Navigator. The unit introduces the concept of an entrepreneurial ecosystem to student entrepreneurs from all 12 member institutions, from a cross-section of disciplines with an even gender balance. Many graduates have enthusiastically promoted SSE.

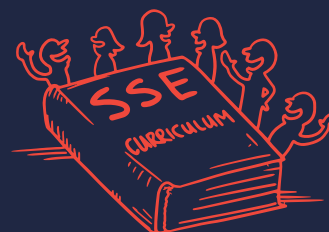
60+
engaged
member faculty

Academic development

We are building a community of practice founded on a passion for practical and experiential learning. Faculty from four member institutions taught our first unit of study. More than 60 academic and professional staff collaborated in activities developing entrepreneurship education practices beyond the confines of institutions or disciplines.

"SSE supports students in their journey to live their dream by facilitating their ideas and giving them the essential skills to run their own businesses."

- Janine Allis, founder, Boost Juice



EduHack

Towards the end of our first year, we brought together leaders in entrepreneurship and innovation from all 12 member institutions for an education hackathon at SSE. We collaborated to rapidly prototype four new units of study, made up of 16 modules. In the coming year, different members will lead the development and delivery of each unit. It is envisaged that student entrepreneurs will earn micro-credentials for each module or fulfil several modules towards an accredited unit.

These four new units revolve around the core entrepreneurial process - ideation, launching and building a business, innovation and growth. The first Ideation unit commenced in Spring 2018.

SSE's EduHack was a collaboration with leaders in entrepreneurship from all 12 members.





Building partnerships

Collaboration is in our DNA. As honest brokers of entrepreneurship education we create learning opportunities across a statewide network of members and partners.

with startup ecosystem

SSE connects student entrepreneurs with key industry players and hosts a range of partner activities from policy forums to pitch nights.

with government

SSE co-hosted a range of Speaker Series activities with state and local government partners, including the NSW Government, City of Sydney, Liverpool City Council and Cooma-Monaro Shire Council.

with business

SSE engages a wide range of corporate partners to connect students with business.

One example is a collaborative innovation workshop co-hosted with ResMed, a company that creates groundbreaking medical devices and health solutions, which explored how design thinking can drive innovation.

with the community

SSE partners with a diverse range of community organisations to make opportunity accessible to all.

For instance, as part of International Women's Day, Heads Over Heels and SSE co-hosted "Igniting Opportunity" to inspire the next generation of female entrepreneurs to #PressforProgress and generate opportunities.



12
member
institutions

Our strong network of 12 members has participated in SSE's nine learning activities. We co-hosted 25 activities with our members at SSE's Ultimo campus and regional member campuses. SSE also hosts a variety of member activities in venue partnerships that drive entrepreneurship, from student showcases to startup pitch nights.

30%
regional
participation

SSE is Sydney in name only, statewide in operation. At least thirty per cent of student entrepreneurs participating in SSE units live in regional communities. Two-way mobility scholarships make SSE accessible to student entrepreneurs in remote and regional areas, ensuring a transfer of talent and ideas between Sydney, other cities and towns, and less populous regional areas.

Global connections

4

bootcamps

SSE ran four International Bootcamps during the year encouraging early-stage entrepreneurs to adopt a global mindset to scale their business.

40

founders

A partnership with the NSW government will immerse up to 40 NSW based startups in India's fast-growing tech markets on a 10-day bootcamp.

14

participants

Fourteen students and founders who joined SSE International Bootcamps were immersed in the startup ecosystem in Sweden, China and the USA.

30

connections

SSE hosted global thought leaders, partnered with the City of Sydney's Visiting Entrepreneurs Program, and engaged a wide range of global partners and organisations.

31

6

average score for
Australian education

Net promoter score

When we survey the SSE community after they have participated in our learning activities, they're very satisfied.

Net promoter scores ranges from -100 (all detractors) to +100 (all promoters). A positive figure is generally considered good.

SSE wins global award

In its first year, Sydney School of Entrepreneurship received the top global industry award for the 2018 Outstanding Emerging Entrepreneurship Centre.

The Global Consortium of Entrepreneurship Centres (GCEC) awards recognise the very best of university entrepreneurship from 250 of the leading universities engaged in entrepreneurship education. The GCEC is the leading global organisation collaborating to advance, strengthen and celebrate universities that are educating the entrepreneurs of tomorrow.



SSE alumni testimonials



"The other students came from a huge range of degrees, like social work and mathematics, and we got to form all these connections with each other through the activities that we did. We also had amazing guest speakers."

Casey Bootsma,
Charles Sturt University

*Bachelor of Business,
Charles Sturt University.
Now works at Regional
Development Australia
in Albury-Wodonga.*



"SSE provided me with an entry into the entrepreneurial ecosystem. I got to meet students with similar entrepreneurial personalities from UNSW, from UNE and other universities and cross-pollinate ideas. I would have never got this opportunity otherwise."

Marley Palin,
Macquarie University

*Founder of Glue & You, a
social enterprise to empower
survivors of domestic
violence.*



"I made more friends among that cohort of 60 people over a 12-week period than from the hundreds of people at university in two years. It felt like everyone was there for each other - even the teaching staff. It was a really friendly environment with a whole new perspective."

Liam Scanlan
The University of Newcastle

*Founder of surfwear brand
Eat Your Water.*

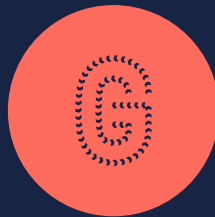
Nine ways to learn

Nine learning activities engage students, members and the wider SSE community, connecting them with leading academics, industry experts, policymakers, mentors and global networks.



Speaker Series

A conversation with the brightest entrepreneurial minds.



Global Series

International leaders in their field speak with the SSE community.



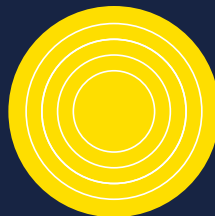
Demo Day

A celebration to showcase next-generation Australian Entrepreneurship.



Units

Blended, experiential accredited units that develop entrepreneurial skills, mindset and a global outlook.



Bootcamp

International bootcamps for student entrepreneurs and member alumni with a startup to learn, partner and pitch with the best.



Masterclass

Specialised, intensive entrepreneurial classes designed for student entrepreneurs and SSE alumni.



Development

Rapid evolution for entrepreneurship educators. For academic faculty and staff of our member institutions.



Co-creation

One-of-a-kind learning experiences co-created with members and partners.



Colloquium

Forums for leading entrepreneurship researchers and member academics.



Units – for student entrepreneurs

SSE units of study are our flagship learning activity. In 2017-18, we offered our first unit of study to two cohorts of student entrepreneurs. Our growing SSE Alumni is a powerful network of emerging entrepreneurs.

First SSE graduates

The Navigator is SSE's inaugural unit - a 10-week blend of online and experiential learning with two face-to-face intensives. The first cohort graduated in November 2017, followed by a second in June 2018. A third cohort began in July.

The Navigator is open to all undergraduate students enrolled at any member university or TAFE NSW. It is an intense hands-on process of discovering the world of entrepreneurship. Student entrepreneurs join a diverse mix of participants from all 12 SSE members and seven different

disciplines, at least 30 per cent regional students, with an even gender balance.

It's this rich diversity of passionate student entrepreneurs sharing different outlooks and life experiences that drives innovation and creativity at SSE.

The unit is practical, project-based and collaborative. Participants map their local ecosystems and practice entrepreneurial skills. They gain direct access to a powerful network of academics, industry partners, successful startups, graduate student entrepreneurs and other contributors. They have industry

visits, entrepreneur panel discussions and mentoring by guest lecturers.

The unit can count for credit towards a university degree or TAFE NSW program, or can be a co-curricular unit.

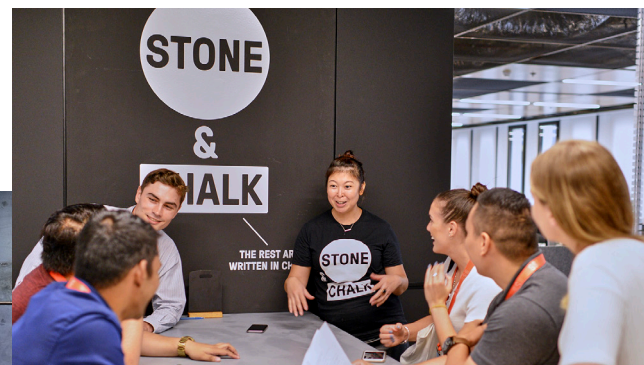
The first unit was led by a teaching team from three SSE member institutions - University of Technology Sydney, Macquarie University and Charles Sturt University – and an additional teacher from UNSW Sydney.

Connecting with industry, business and government

Massive Ecosystem Scavenger Hunt (MESH) is an immersive activity where student entrepreneurs visit government, corporate and industry partners in the local ecosystem, with plenty of networking and guest lectures.

MESH partners during the year in review include Bay9, Blackbird Ventures, Blue Chilli, Canva, CBA Innovation Lab, Cicada Innovations, Energy Lab, Facebook, Legal Vision, Fishburners, H2 Ventures, Haymarket HQ, Muru-D, StartCon Freelancer, Stone & Chalk, and Tank Stream Labs.

Student entrepreneurs received mentoring from expert partners in government and business, including Artesian Venture Partners, Australian Centre for Rural Entrepreneurship, City of Sydney, FarmPay, For The People, Jobs for NSW, Muru-D, Springboard Enterprises, Springday, Startmesh, Startup Aus, Tapit, Tekuma, and Theo + Theo.





New mindset

Amanda Torrisi, a TAFE NSW student, completed the first Navigator unit. "I gained more knowledge not only from the course itself and the teachers but also from the other students. We all have a different background and bring different skills to the table. I loved networking with them," she says. Amanda inspired her sister, Katrina, a student at UTS, to do the second Navigator course.

"If you want to invent, you have to experiment and pioneer, and you won't usually know if something will work unless you try it. I encourage you to try it and I'll be cheering for you as you go on to do big things."

Jeff Bezos,
CEO Amazon

Personal letter to
first SSE cohort, 2017.



Mentoring

Harrison Chen, a UNSW Sydney student, completed the inaugural Navigator Unit. "The Navigator was invaluable to my development as a budding entrepreneur as it really handed me all the tools and resources I needed to start my own project. In particular, receiving mentoring from existing successful startup founders and being able to talk with them about how to overcome all the difficulties and challenges of creating a startup was very helpful."

Collaboration

SSE's impact occurs in unexpected ways. After completing The Navigator in 2017, both **Miles Archibald** from the University of New England (UNE) and **Rosie Dawson** (below) from the University of Technology Sydney collaborated to create and launch the UNE Regional Venture Student Society in Armidale.

Rosie worked as an intern in the SSE Activator program, charged with fostering entrepreneurial activities on regional campuses. Miles wanted to network with like-minded students. His sister, Ali Archibald, also a Business major at UNE, was so inspired that she enrolled in The Navigator in 2018.



Top right and left: Student entrepreneurs workshop ideas at the SSE campus.

Core unit teaching team

SSE's core units are delivered by a team of academics from across member institutions with input from the wider entrepreneurship and innovation community.

University of Technology Sydney (UTS) academics Dr Martin Bliemel, Professor Roy Green and Dr Jochen Schweitzer curated and led SSE's core unit, The Navigator.

They were supported by Charles Sturt University's Professor Morgan Miles, Macquarie University's Dr Lara Moroko and Dr Lars Groeger, and Dr Alejandra Mery Keitel from UTS.

The team designed the various modules and engaged with students online and at SSE. Industry experts, policymakers, entrepreneurs and advisers also contributed to the course.

Professor Roy Green

Former Dean of UTS Business School

Dr Martin Bliemel

*Senior Lecturer, Faculty of Transdisciplinary Innovation
University of Technology Sydney*

Dr Jochen Schweitzer

*Director of MBA Entrepreneurship
UTS Business School*

Dr Lara Moroko

*Lecturer in Management (Marketing)
Macquarie University*

Professor Morgan Miles

*Professor of Entrepreneurship
Charles Sturt University*

Dr Lars Groeger

*Lecturer in Management
Macquarie Graduate School of Management*

Ms Selena Griffith

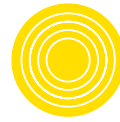
*Senior Lecturer
The Centre for Social Impact
UNSW Sydney*

Dr Alejandra Mery Keitel

*Casual Academic
University of Technology Sydney*

Dr Jochen Schweitzer working with students from The Navigator.





International Bootcamps – for startups

SSE International Bootcamps connect emerging entrepreneurs to key players in international centres of innovation to learn, partner and pitch with the best.

Encouraging student entrepreneurs and early-stage startups to build a global mindset is an important part of SSE's vision.

Our International Bootcamps connect participants to international centres of entrepreneurship, where they are immersed in the local ecosystem. They gain the opportunity to pitch to global investors and learn from their peers.

Four International Bootcamps to China, USA and Sweden provided high-impact opportunities for emerging entrepreneurs to scale their business into global markets and build SSE's international network.

"We had seven flights in 11 days, pitched to the biggest companies in China and got the second-biggest e-commerce company in China on board. You're constantly innovating and surrounded by people who are seasoned entrepreneurs. That's something that you couldn't achieve in several years, and you've done it in a week."

- Isaac Honor, University of Sydney.

Case study: SSE International Bootcamps to China

September 2017 – Three startups pitched their ideas in China:

- FarmPay – founded by Naomi Stuart, a graduate from The University of Sydney.
- Sonder Design – founded by Francisco Serra-Martins, a graduate from The University of Sydney.
- Springday – founded by Georgina Drury, a graduate from UNSW Sydney.

June 2018 – Two startups struck deals in China.

- Elite Robotics – co-founded by Sahil Harriram, an alumnus of The University of Newcastle. Sahil set up a manufacturing deal for his intelligent, autonomous vehicle platforms with a company in Shenzhen.
- AusMask – co-founded by brothers Isaac and Elias Honor from The University of Sydney and their friend Jack Graham

from UTS. AusMask pitched to JD.com, the second-biggest e-commerce site in China, and set up a deal to launch their patented anti-pollution mask, with Australian botanicals embedded into the filter, on the site's crowdfunding platform.

SSE partners with the ChinaStart program. A third China bootcamp is scheduled for late October 2018.

Learning activities – for community

SSE hosts regular learning activities for the wider SSE community to engage with leading entrepreneurs, global thought leaders and academics who are regarded as experts in their field.



Speaker Series

SSE invites the public to learn from leaders in the entrepreneurial ecosystem.

In May 2018 our activity focused on a Western Sydney Young Entrepreneurs Speaker Series designed to help young people develop, pivot and kickstart their business idea. SSE co-hosted three learning activities in collaboration with Liverpool City Council.

TAFE NSW Liverpool co-hosted a Kickstarting Your Business seminar, University of Wollongong co-hosted a Customer Validation workshop, and Western Sydney University co-hosted a Business Ideation activity.



Global Series

SSE connects respected entrepreneurship thought leaders with the startup ecosystem to share global best practice and inspire emerging entrepreneurs.

SSE hosted a Global Series 'The Future is Female' at the University of Newcastle with renowned mentor and serial entrepreneur Vicki Saunders, founder of Toronto-based SheEO.

We partnered with the City of Sydney's Visiting Entrepreneur Program to co-host a Global Series with Stephanie Hannon, former Chief Technology Officer of Hillary Clinton's presidential campaign and the first woman to hold this role, to speak about resilience and learning from failure.



Masterclass

SSE collaborates with its members and partners in government, business and industry to create immersive and practical learning experiences.

Medical device company ResMed, an innovative market leader, held a collaborative workshop at SSE for students to explore how ResMed uses design thinking and exploratory techniques to develop its devices and health-solution software.



Demo Days

SSE hosts founders and emerging entrepreneurs from our members to pitch ideas for new ventures and showcase emerging talent.



Former Chief Technology Officer of Hillary Clinton's US presidential campaign, Stephanie Hannon captivated a full house at an SSE Global Series.

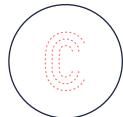
Learning activities – for members

SSE offers professional development opportunities for academic and professional staff of its members to build a community of practice in experiential entrepreneurship education.



Co-creation

SSE embraced the hackathon concept to collaborate with leaders in innovation and entrepreneurship from all 12 members to co-create a new education and training portfolio. In one day, we rapidly prototyped four new units of study made up of 16 modules. We are delivering the four new units in 2018-19, starting with Ideation in Spring 2018.



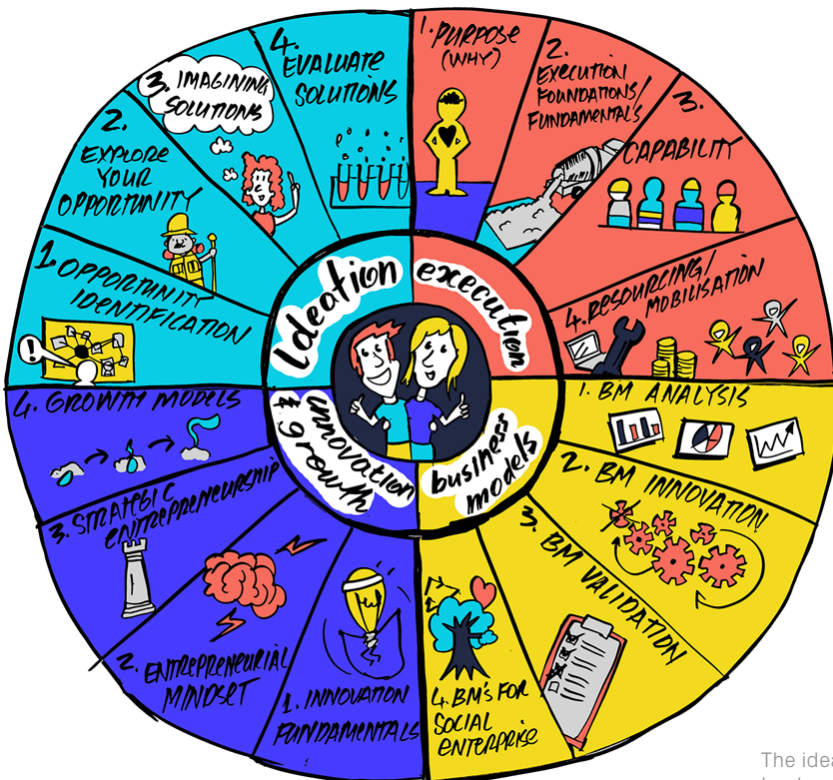
Colloquium

A development opportunity for member academics at pre-PhD, PhD and Postdoctoral level to refine and share research. Professor Johan Wiklund, Professor of Entrepreneurship at Whitman School of Management, Syracuse University, US conducted the first Colloquium in April 2018 for SSE member academics on entrepreneurship and mental health.



Development

SSE is building a community of practice by offering academic and professional staff cross-institutional collaboration opportunities to learn new entrepreneurship education techniques. SSE partnered with Kaospilot to offer a two-day workshop, attended by academic staff from four member universities. The workshop explored the latest design methodology for instructional design centred around experiential learning.



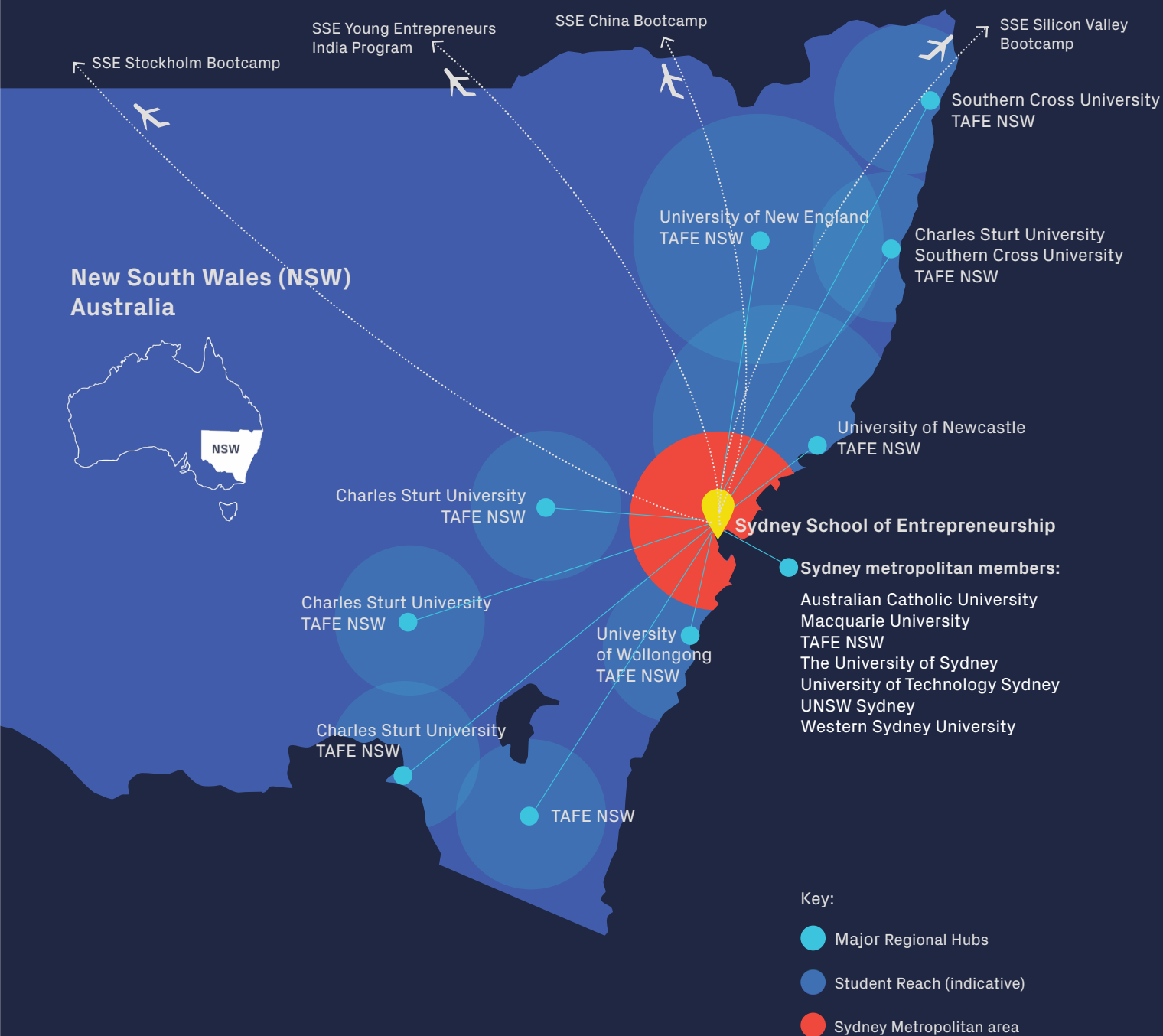
"This very applied and helpful course lives and breathes experiential learning, peer support and helps establish a community of likeminded educators."

*- Jochen Schweitzer
Kaospilot participant, UTS.*

The ideation map drawn at the end of the EduHack day when 35 leaders in entrepreneurship education collaborated at SSE to rapidly prototype a new curriculum for 2018-19.

Our reach

SSE is Sydney in name only. The School brings together student entrepreneurs from diverse backgrounds, disciplines and locations across NSW and helps emerging entrepreneurs forge global connections.



Future activities

In 2018-19, SSE is expanding the number of student entrepreneurs in SSE learning activities and growing our collaboration with members and partners.

To scale up the delivery of our learning activities we will build on our existing program in collaboration with our members. We will offer four new units of study in the core entrepreneurial process – ideation, launching and

building a business, innovation and growth.

We are planning to deliver our core unit, The Navigator, at member campuses and exploring the potential to deliver more activities online.

Our global reach continues to expand as we partner with a growing network of international academic experts, entrepreneurs and business leaders to inspire a new generation of Australian entrepreneurs.



2019 India bootcamp

In an exciting partnership between the NSW Government and SSE, 40 young entrepreneurs with a NSW based startup will be immersed in India's fast-growing tech startup ecosystem during a 10 day bootcamp in early 2019.

Founders of early-stage, scalable global startups that will benefit from exposure to the India market will meet

for the first time at a masterclass at SSE, then travel to India to visit innovation hubs in Mumbai, Bengaluru, Pune and Ahmedabad.

The program will promote business partnership between NSW and India's dynamic technology markets, and inspire emerging entrepreneurs to develop a global mindset.

Four new units

In 2018-19, SSE will develop and deliver four new units. The first new unit – Ideation – commenced in October 2018.

Ideation stimulates creativity and provides student entrepreneurs with the tools to investigate and reframe problems into compelling and impactful opportunities.

Students hone their ability to apply design thinking principles, critical for both startups and established organisations.

The unit was developed and delivered with The University of Newcastle (UON), led by UON Adjunct Professor Peter Kelly.

The 10-week program combines online learning and a single block of four intensive face-to-face sessions at the SSE campus.

Young Entrepreneurs International Bootcamp INDIA



India

TAKE YOUR STARTUP TO INDIA

4 cities
40+ companies
10 days



Apply at sse.edu.au/india

A partnership with the NSW Government



Situation
Complication

Unprecedented
New Partnership

Sydney
School of
Entrepreneurship

EDUCATION



Building J
651-731 Harris Street
Ultimo NSW 2007

PO Box 791
Broadway NSW 2007

Ph: +61 2 8029 1999

ABN 64 615 652 778
ACN 615 652 778

@SSENSW

#SSENSW

www.sse.edu.au